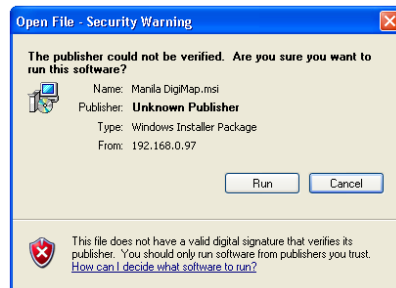


1. System Requirements

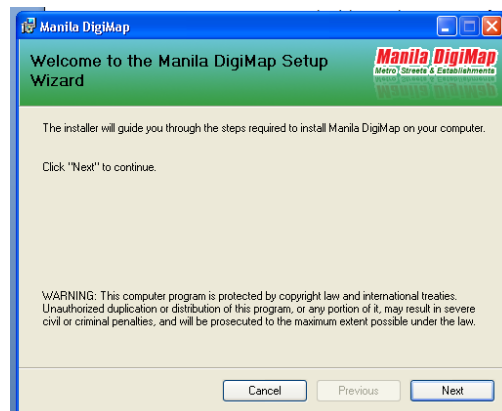
- a. Hardware.
 - i. Processor P4
 - ii. RAM 512MB
 - iii. VGA/CRT monitor
- b. Software
 - i. Adobe Flash Direct X

2. Installation

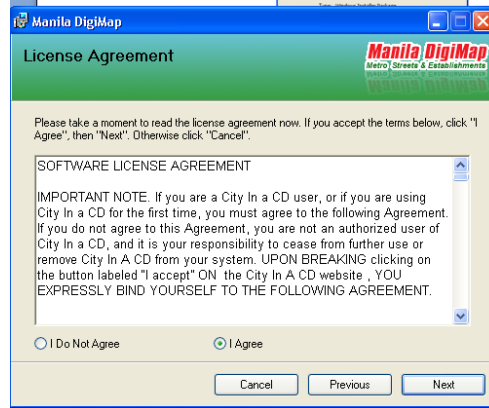
- a. CD Distribution
 - i. Insert Manila DigiMap to the CD- ROM.
 - ii. Menu for Installation will automatically open:
 - 1. Manual File
 - 2. Flash Direct X Installation
 - a. Adobe Flash Direct X must be installed first before the Manila DigiMap Application.
 - 3. Manila DigiMap Installation (Go to 1.a.iii)
 - 4. Exit
 - iii. A Security Warning below might show. Just click the RUN button to continue.



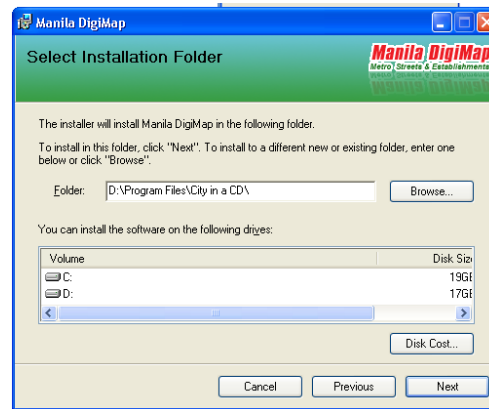
- iv. Welcome to Manila DigiMap Set-up. Click the NEXT button to continue installing the program.



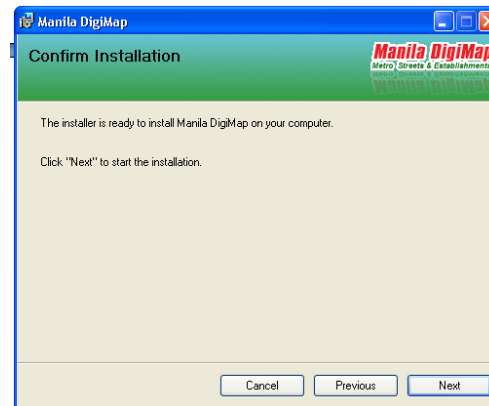
- v. License Agreement. Choose I agree and then click the Next button to continue.



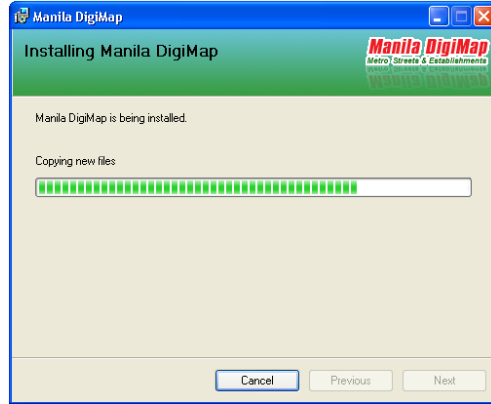
- vi.
- vii. Select Installation Folder.



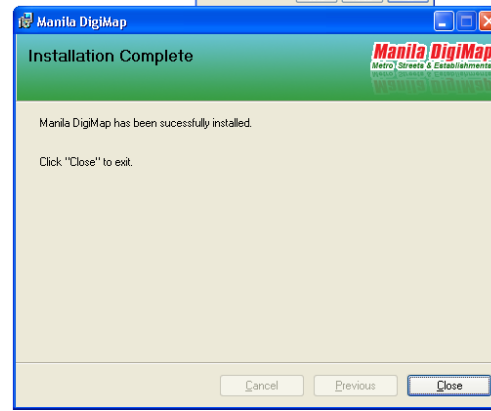
- viii. Confirm Installation.



- ix. Installation process.

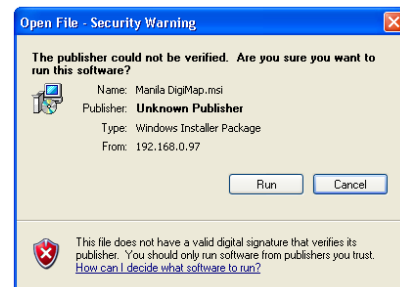


- x. Installation Complete. Click the Close button to finish the Installation process.

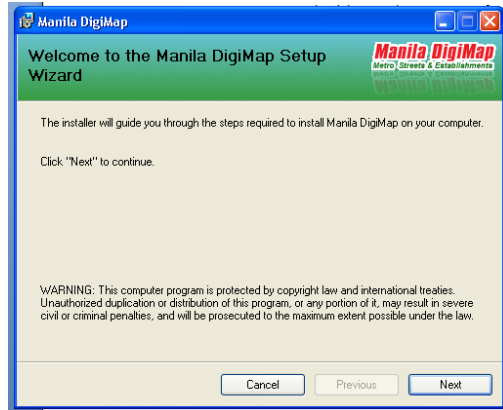


b. Download

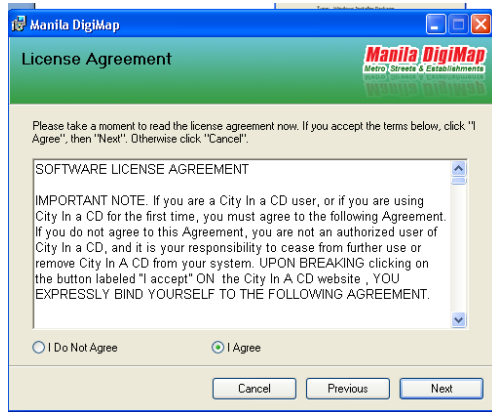
- i. Download the Manila DigiMap.msi from the site.
- ii. Double click the file. In Windows XP, a Security Warning might show. Just click the RUN button to continue.



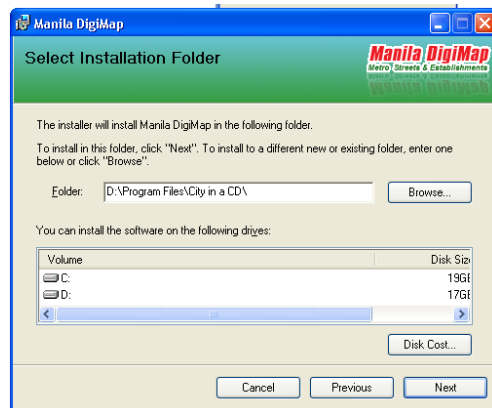
- iii. Welcome to Manila DigiMap Set-up. Click the NEXT button to continue installing the program.



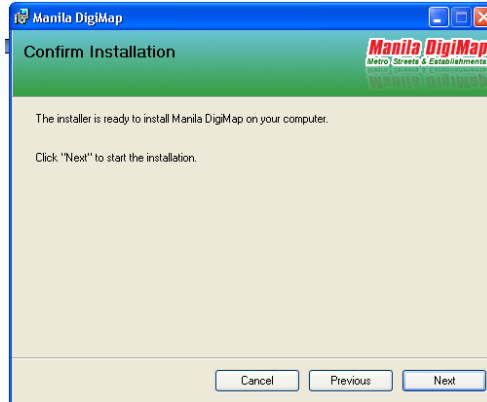
iv. License Agreement. Choose I agree and then click the Next button to continue.



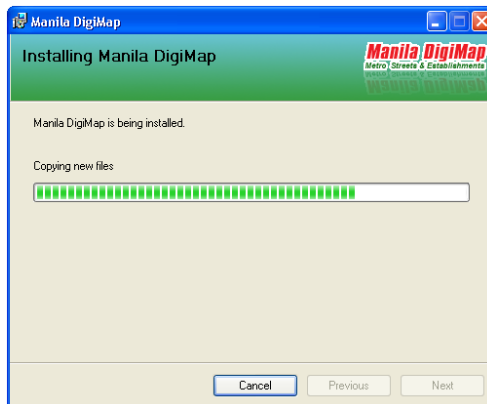
v. Select Installation Folder.



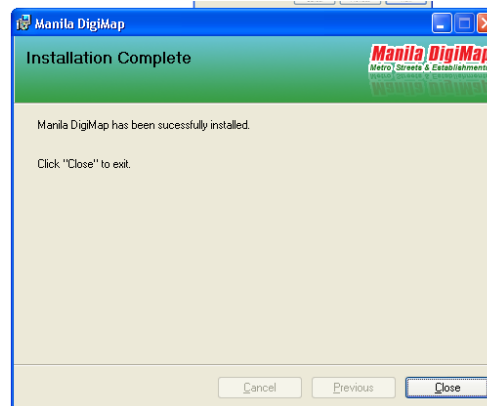
vii. Confirm Installation.



viii. Installation process.



ix. Installation Complete. Click the Close button to finish the installation process.



3. Using Manila DigiMap

- a. Activation/Registration. By default Manila DigiMap will run as a trial that can be used for a certain period of time. If you want to use the Trial Version, click the Try button. If you want to take advantage of the Registered Version, click the Register button.

If you buy Manila DigiMap from the store or from the web, you have to contact us and provide the following information:

1. KeyCode. The Keycode was generated during the installation.
2. Product Key. This can be found in the CD inlay. If you buy the application online, you have to provide us the Order Number.
3. Complete Name
4. Email-address
5. Company Name




b. Navigation


- i. Per City navigation. You can navigate the Metro Manila cities per municipality. Buttons for each municipality can be found on the left side of the screen.
- ii. Navigating the Map. You can click on the map and drag the mouse to any direction (Note: Left click on any part of the map. Hold, do not release).
- iii. Searching. Using Manila DigiMap you can search on the following categories:
 1. Street
 2. Building/ Establishments
 3. School
 4. Government Agencies
 5. Hospitals
 6. Malls
 7. Hotels
 8. Markets
- iv. How to search?




- Choose the City found on the left side of the screen.
- Type your search on the [Type a search item] box found on the top right corner of the screen.
- Choose the Category
- Click Search Button. [Search results will display on the box below the search button.]
- Click the Result. The Map will automatically navigate on the exact location. The arrow must be pointed to the exact location]

v. Zoom in/ Zoom out

1. Zoom in. If you want to zoom in to a particular area, you can click the zoom in () button or press (+=) key on your computer keyboard.
2. Zoom out. If you want to zoom out to see the area on a wider perspective, click the zoom out () button or press (-_) key on your computer keyboard.
3. Reset. Reset the size of the map by clicking the Reset  button to see the original size.

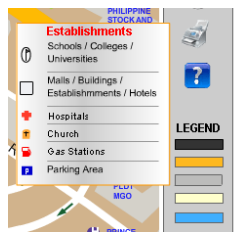
vi. Printing. Print the map by clicking the Print () button.

vii. Navigation Help. A simple ready help on the map navigation can be provided when you click the Navigation Help () button.



viii. Legends

1. Black = Railways
2. Orange = main road
3. Gray =



4. Light Yellow/White = streets
5. Light blue = all belong to body of water
6. Brown = background of the map

4. Activation

- a. Read 3.a

5. Download and Updates

- a. Visit <http://map.directorymanila.net> for more updates

6. Technical Support

- a. Online support
- b. Phone support
- c. Email support